

SPLENDOR

Technical specifications | Technische Daten | Spécifications techniques

Manufacturing technique Herstellungstechnik Technique de fabrication		1/10 twist 1/10 twist 1/10 twist
Pile composition Material der Nutzschrift Composition du velours		100% PA 6+
Secondary backing Rückenausstattung Dossier		Weaveback
Width Breite Largeur		400 cm
Roll length Rollenlänge Longueur du rouleau		25 m
Pile height Polhöhe Hauteur du velours	ISO 1766	6 mm
Pile weight Polgewicht Poids du velours		1000 g/m ²
Total height Gesamthöhe Hauteur totale	ISO 1765	8 mm
Total weight Gesamtgewicht Poids total	ISO 8543	2055 g/m ²

Number of tufts Noppenzahl Nombre de points	ISO 1763	173 200/m ²
Minimum order quantity special colours Mindestabnahme Sonderfarben Quantité minimum couleurs spéciales		400 m ² /colour 400 m ² /Farbe 400 m ² /couleur
Fastness to rubbing (dry) Reibechtheit (trocken) Solidité au frottement (sec)	ISO 105 X12	4-5
Fastness to rubbing (wet) Reibechtheit (nass) Solidité au frottement (humide)	ISO 105 X12	4-5
Water fastness Wasserechtheit Solidité à l'eau	ISO 105 E01	4-5
Fastness to light Lichtehtheit Solidité à la lumière	ISO 105 B2	5
Thermal resistance Wärmedurchlasswiderstand Résistance thermique	ISO 8302	0,072 m ² K/W
Impact sound insulation Trittschalldämmung Réduction de la transmission du bruit de choc	ISO 140 - 8	28 dB
DOP Nr / DOP n°		1087#01092/15343/WI



CARUS®

BIG Floorcoverings nv
Rijksweg 442
B-8710 Wielsbeke - Belgium

Showroom
Boffonstraat 3
B-8710 Wielsbeke - Belgium

www.carusflooring.com
carus@bintg.com
T +32 (0)56 67 42 11 - F +32 (0)56 67 48 30

Colours | Farben | Couleurs



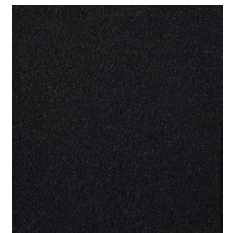
141



152



157



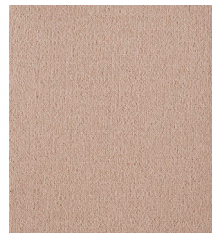
158



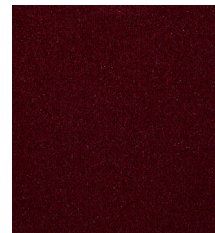
237



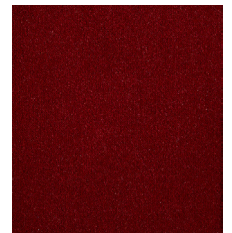
333



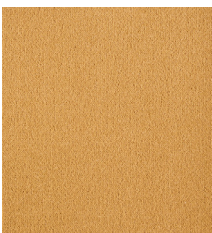
396



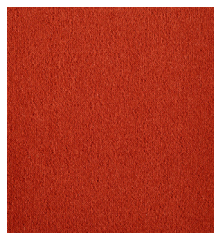
443



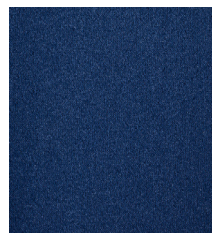
469



508



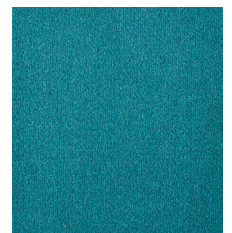
774



875



890



898



956



965



993

CARUS[®]

BIG Floorcoverings nv
Rijksweg 442
B-8710 Wielsbeke - Belgium

Showroom
Boffonstraat 3
B-8710 Wielsbeke - Belgium

www.carusflooring.com
carus@bintg.com
T +32 (0)56 67 42 11 - F +32 (0)56 67 48 30